

Suspended luminaire/light run feed luminaire - Single micro louvre with 80° lens - direct/indirect distribution

Housing of sheet steel in a delicate square design; black, die-cast aluminium end faces; Housing colour silver grey/white aluminium RAL 9006; Direct/indirect light distribution, direct share by means of 80° LED clear lens with single micro louvre, black, homogeneous indirect share with opal diffuser made of PMMA, for VDU workstations, omnidirectional glare reduction in accordance with the current standard DIN EN 12464-1.

Electrical connection via integrated transparent connection cable 5x0.75mm², length 1900mm, wired ready for connection. Light Control: netlife flex10L; Regiolux Classification: netlife flex; Control signal: DALI, Radio; Number of control gear (max): 5; Communication: Bluetooth; App name: Casambi, 4remote BT; System compatibility: flex10; flex10X; flex10L; flex37; flex39; Note: compatible with Casambi; Application: Office, Meeting rooms, Secondary rooms, Retail, Corridors, Garages, Classrooms, Sports facilities; Function: Motion detection*, Corridor function*, Guided Light*, HCL (only with DT8 luminaires), presence detection*, Daylight control, Tunable white (only with DT8 luminaires), Manual dimming, *only by auxiliary devices. Complete height-adjustable suspension set with canopy is included in delivery. Black housing and white single micro louvre possible on request.

CHARACTERISTICS

| | |
|-------------------------------|------------------------------------------------------------------------|
| Order number | 60615031675 |
| EAN number | 4020863422050 |
| Commodity code | 94051190 |
| Certification mark | IP 20, Protection class I, VDU 65°<100, F, Indoor, CE |
| Impact resistance (IK rating) | IK02 |
| Ambient temperatur | ta 25°C |
| Warranty period | 5 years |
| State funding programs | BEG - Federal funding for efficient buildings (valid only for Germany) |

ELECTRICAL ENGINEERING

| | |
|--------------------------------------|------------------------------------------------------------|
| Controller | Electronic driver DALI (1 pcs.) |
| Light Control | netlife flex10L |
| Wiring | 5x0.75mm ² |
| System output | 35W |
| Mains voltage | 230V/50Hz |
| Circuit breakers (inrush current) | 12 pieces/B10, 20 pieces/B16, 21 pieces/C10, 33 pieces/C16 |
| Energy efficiency class/light source | C |

LIGHTING TECHNOLOGY

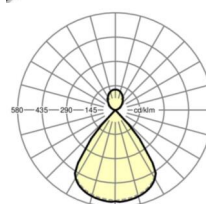
| | |
|------------------------------------|-----------------------------------------------------|
| Placement | LED, Colour rendering/Light colour CRI ≥ 80 / 3000K |
| Colour tolerance (MacAdam) | 3SDCM |
| Photobiological safety (Luminaire) | RG1 |
| Nominal luminous flux | 4698lm |
| LED service life | 50000h L80/B10 (Tq 25°C) |
| Luminaire luminous efficiency | 135lm/W |
| UGR lat./long. | 15.7 / 15.6 |

MECHANICS

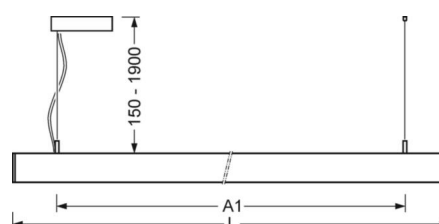
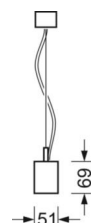
| | |
|----------------------|-----------------------------------------------------------|
| Housing colour | silver grey/white aluminium RAL 9006 |
| Dimensions (LxWxDxH) | 1411mm x 51mm x 69mm |
| Weight (net) | 3.8kg |
| Type of installation | Pendant individual mounting, Pendant light strip mounting |

DEEP-LINK

<https://www.regiolux.de/en/article/60615031675>



| | |
|----------------|----------------|
| Reference | LED 4700lm 830 |
| ηLB | 100 % |
| Φ ↓/↑ | 73 % / 27 % |
| UGR lat./long. | 15.7 / 15.6 |



Dimensions

| | | |
|-------|---------|-----------------------------------|
| L | 1411 mm | Length |
| B | 51 mm | Width |
| H | 69 mm | Height |
| A1 | 1200 mm | Mounting distance single mounting |
| P min | 150 mm | Minimum suspension length |
| P max | 1900 mm | Maximum suspension length |

LC SYSTEM

CHARACTERISTICS

| | |
|-------------------------------------|----------------------------------------------------------------------------------------------------------------------------------------------------------------------------------------------------------------------------------|
| Regiolux Classification | netlife flex |
| Control signal | DALI, Radio |
| Number of control gear (max) | 5 |
| Communication | Bluetooth |
| App name | Casambi, 4remote BT |
| System compatibility | flex10; flex10X; flex10L; flex37; flex39 |
| Note | compatible with Casambi |
| Application | Office, Meeting rooms, Secondary rooms, Retail, Corridors, Garages, Classrooms, Sports facilities |
| Function | Motion detection*, Corridor function*, Guided Light*, HCL (only with DT8 luminaires), presence detection*, Daylight control, Tunable white (only with DT8 luminaires), Manual dimming, *only by auxiliary devices |

